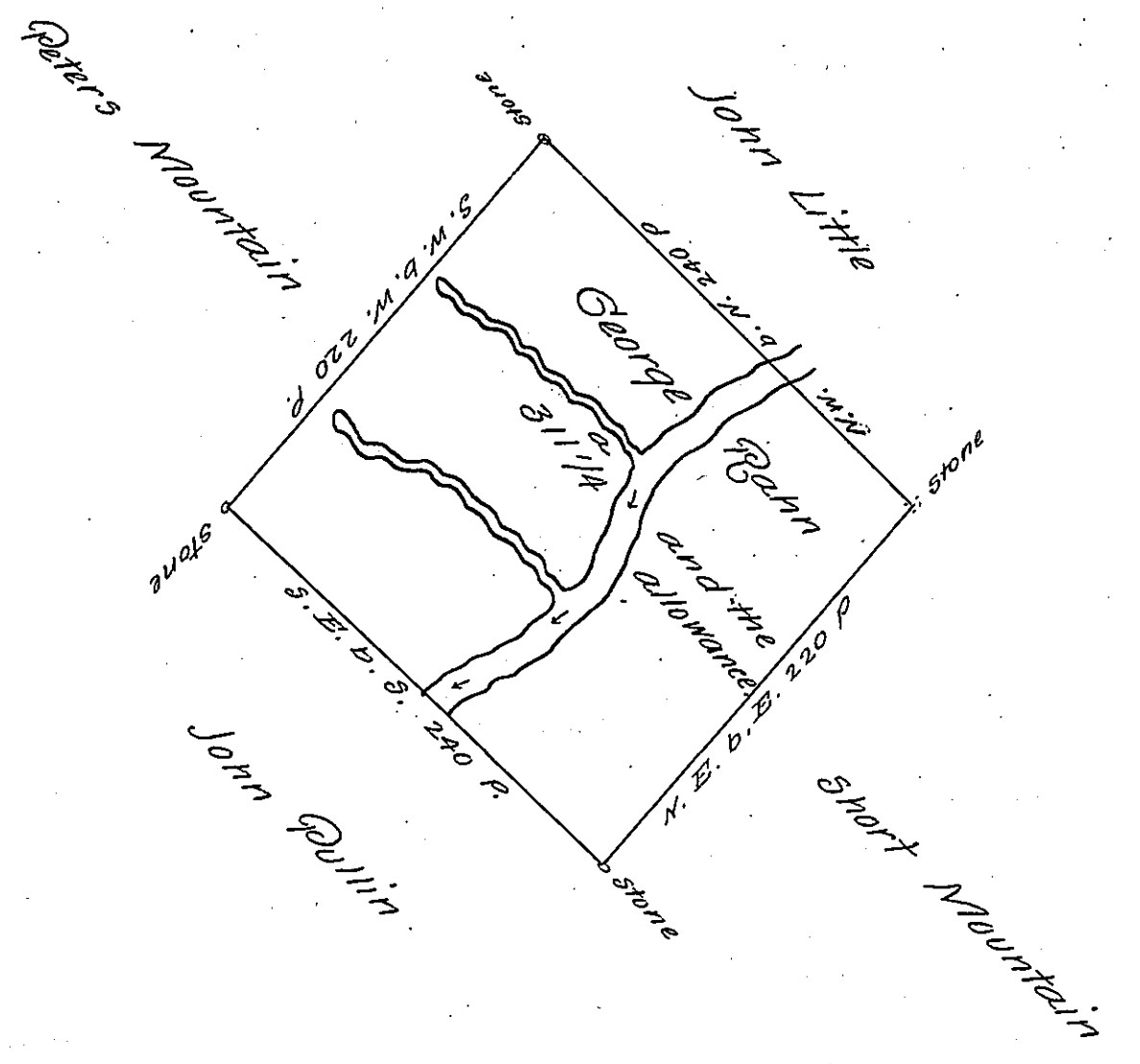


FORM No. 1.



Fahns Head surveyed for George Fahn on the 14th day of December
 the above tract
 1773, containing three Hundred acres one Quarter and the allowance of six
 P. Cent. Situate on the Waters of Clark's Creek Upper Paxtang Township -
 Lancaster County by Warrant of the 24th November 1773.

P. Bartrem Galbraith, D.S.

John Lukens, Esq.,
 Surveyor General.

IN TESTIMONY that the above is a copy of the original remaining on file in
 the Department of Internal Affairs of Pennsylvania, made
 conformably to an Act of Assembly approved the 16th day of
 February, 1833, I have hereunto set my Hand and caused
 the Seal of said Department to be affixed at Harrisburg,
 this twenty eighth day of August 1906

Loac D. Brown
 Secretary of Internal Affairs.